

# Consciousness Connectedness

*(in successful leadership efforts)*



**Nithin Nagaraj**  
Consciousness Studies Programme  
National Institute of Advanced Studies  
IISc. Campus, Bengaluru  
Email: [nithin@nias.res.in](mailto:nithin@nias.res.in)

**NWEY-2019, Bengaluru, 7<sup>th</sup> December 2019**

# Scientific Experiment

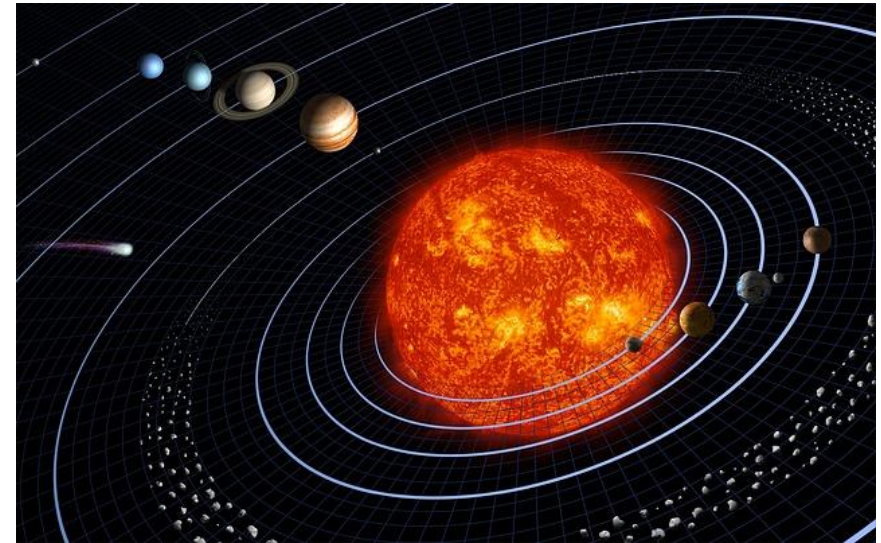
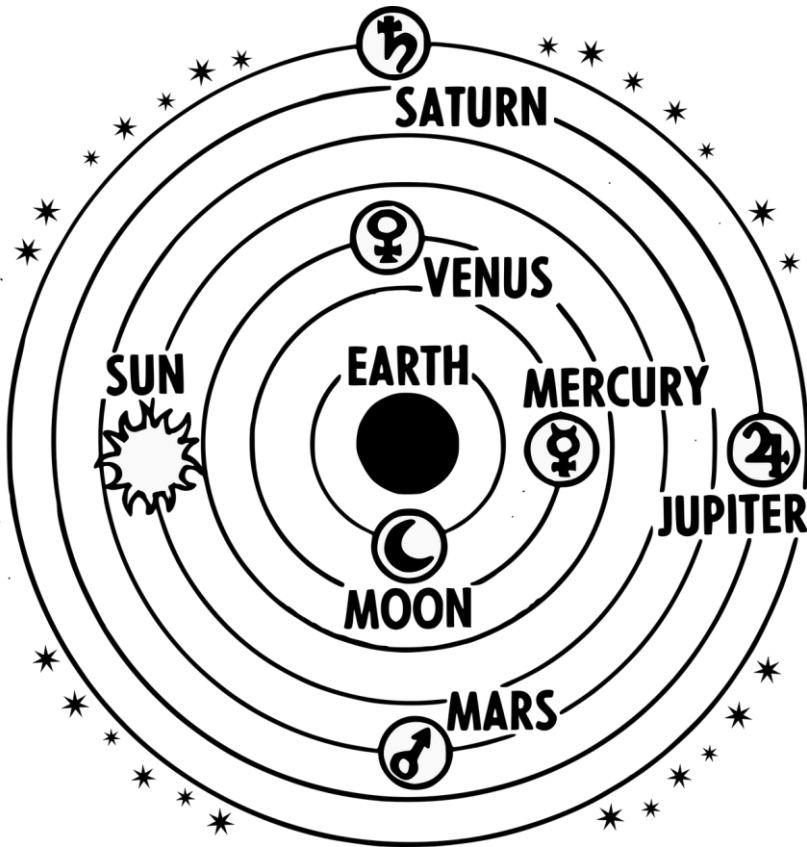
1. Observe
2. Theorize & Analyze
3. Infer



# 1. Observe: Sunrise & Sunset

# 2. Theorize & Analyze

## Geocentric vs. Heliocentric Models



# 3. Infer

Choose Heliocentrism over Geocentrism

## **Which model to choose?**


- Higher explanatory power
- Valid under tight scrutiny (with new data)
- Insight, Understanding & Prediction

# Let's conduct a Scientific Experiment

- Please close your eyes now...

# 1. Observation (Data)

“Experience” is made up of:

- **Consciousness** (“I”), **BEING** (I-AM-ness)
  - Thoughts
  - Feelings
  - Sensations
  - Perceptions
- 
- Contents of experience**

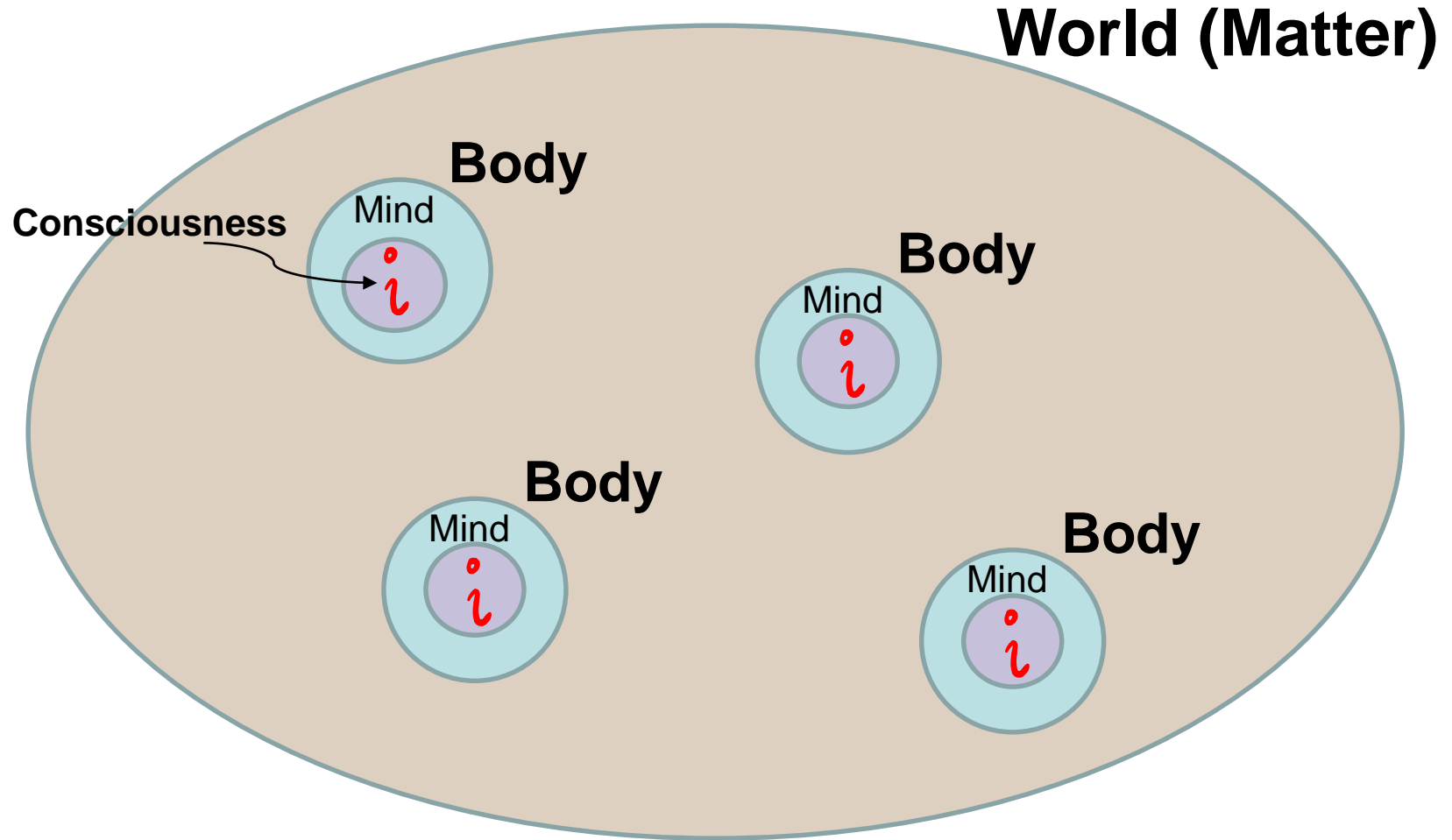
## 2. Theorize & Analyze

Two competing models:

- “Matter-centric” Model (**M**)
- “Consciousness-centric” Model (**C**)

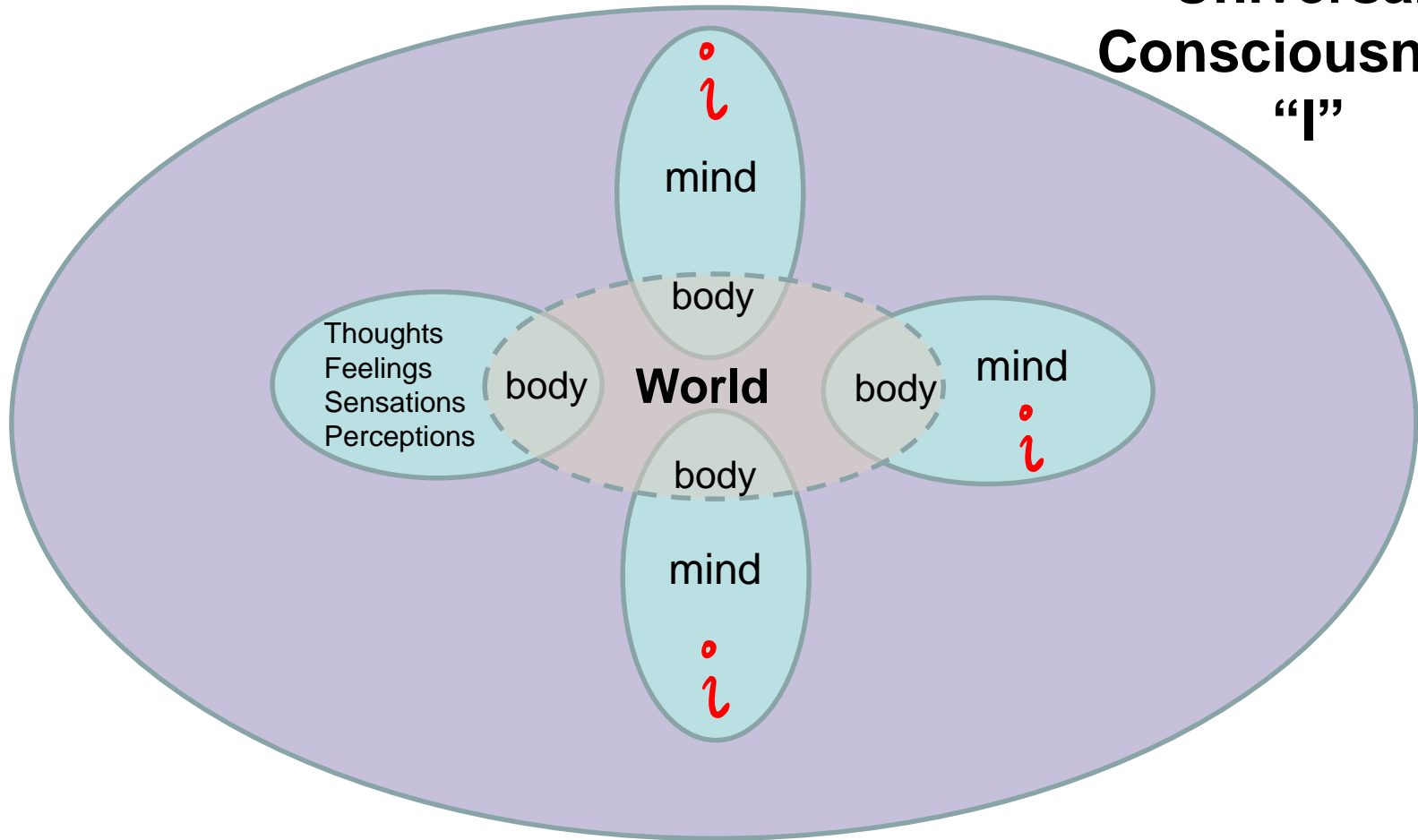


# Model-M: Materialism



# Model-C: Consciousness

**Universal  
Consciousness  
“I”**



***“The Universe is immaterial – mental and spiritual. Live, and enjoy.”***

~ Richard Conn Henry,  
Professor of Physics &  
Astronomy, The Johns  
Hopkins Univ., USA

---

nature > essay > article

---

# nature

---

Essay | Published: 06 July 2005

## The mental Universe

Richard Conn Henry

*Nature* **436**, 29(2005) | [Cite this article](#)

**1050** Accesses | **22** Citations | **18** Altmetric | [Metrics](#)

**The only reality is mind and observations, but observations are**

# Model-M vs. Model-C

## Model-M

- Matter
- World > Body > Brain > Mind
- **Consciousness-Mind-Body appear in World**
- Brain is the locus of the mind

## Model-C

- Consciousness
- Consciousness > Mind > Body/Brain/World
- **Body-Mind-World appear in Consciousness**
- Brain/Body is an image in the mind

# 3. Infer

## Model-M

- Competition
- Exploitation of Nature
- Dog-eat-Dog
- Randomness
- Ethics is deeply problematic
- Minds can only communicate externally
- Separateness

## Model-C

- Co-operation, Altruism
- Nature is our real body
- Compassion & Love
- Intelligence
- “***Natural Ethics***” arises out of shared BEING
- All minds arise from one Universal Consciousness
- **Connectedness**

# Further implications

## Model-M

- NDE, premonition, Deja-Vu, re-incarnation, transcendence rejected
- Inequality/diversity at birth difficult to explain (unfair, unjust & dumb universe)
- Life is meaningless, insignificant - all end in death and decay (entropic soup)

## Model-C

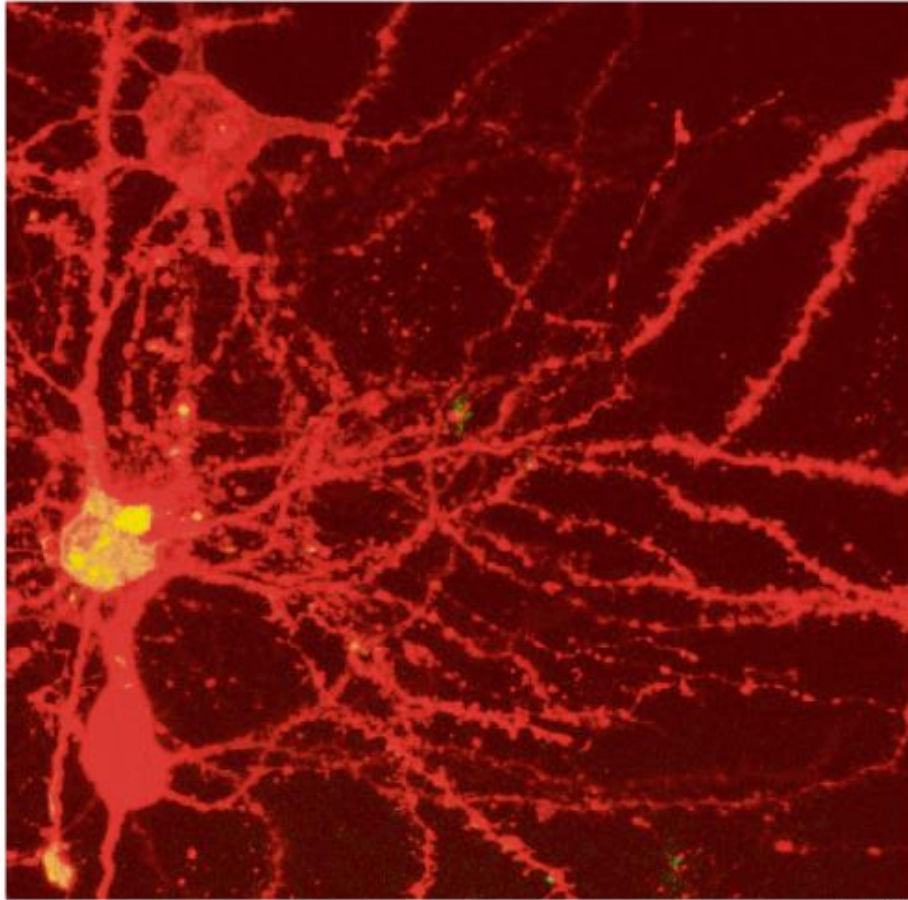
- NDE, premonition, Deja-Vu, re-incarnation, transcendence plausible
- Theory of Karma as a model to explain diversity (just, fair & intelligent Universe)
- Life is precious, and purpose is to realize Universal Consciousness, manifest inherent Divinity

# Current trends in Science of Consciousness

- Donald D. Hoffman's "**Conscious Agents**" (2008)
- Robert Lanza's "**Biocentrism**" (2007)
- Tononi's **Integrated Information Theory** (2004) of Consciousness and its links with 11<sup>th</sup> Century philosopher Abhinavagupta's model of **Kashmir Shaivism** (2016)
- Bernardo Kastrup's **Idealism**
- These resonate with **Model-C** (or its variations)

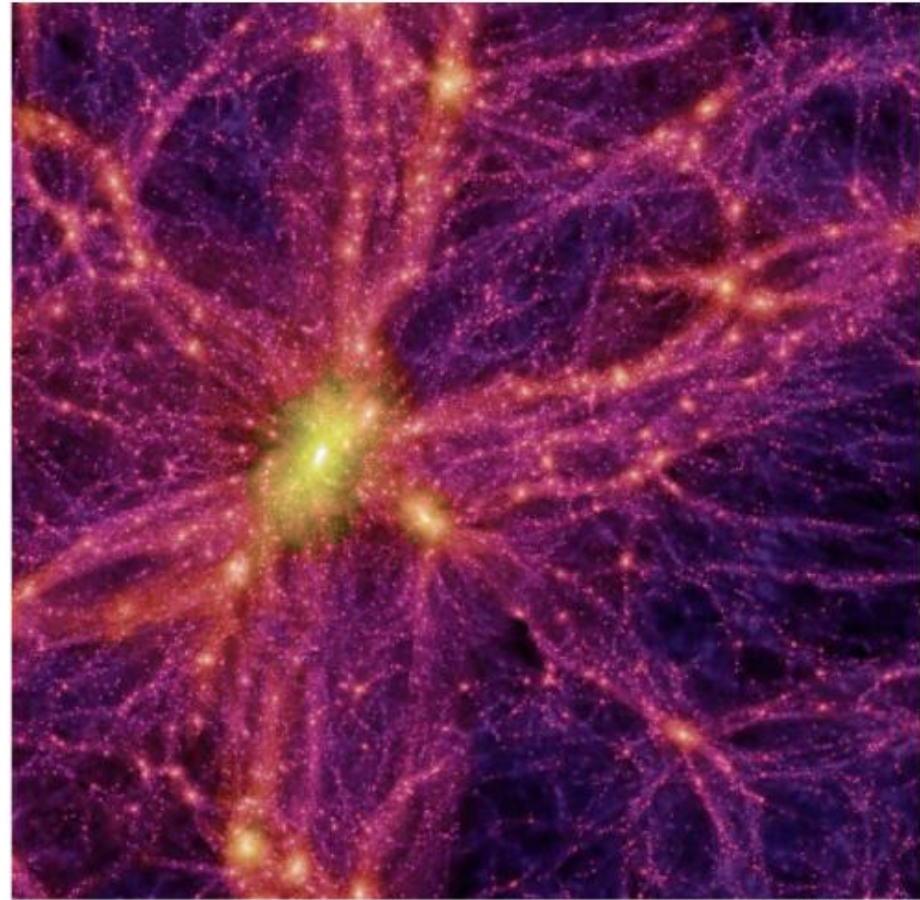
# Universe = Nervous System?

Neurons in a  
mouse's brain



Mark Miller

Simulated image  
of the universe



Virgo Consortium

Source: Mark Miller; Virgo consortium for Cosmological Supercomputer Simulations  
[www.visualcomplexity.com](http://www.visualcomplexity.com); The New York Times, 18 August 2006.



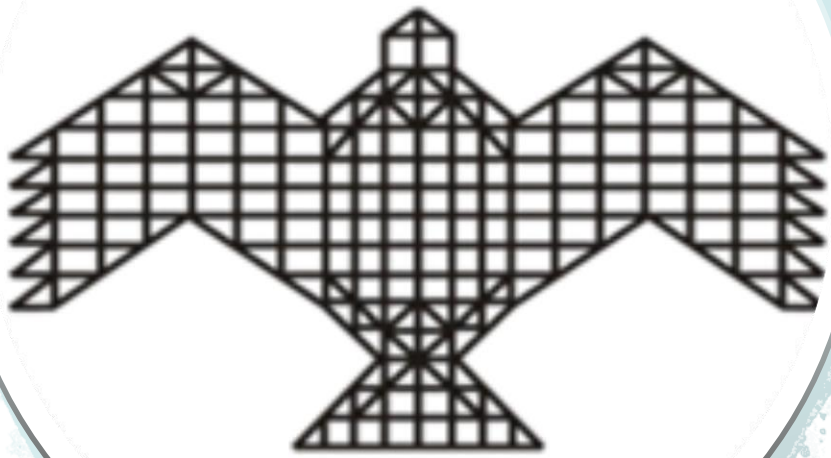
# To conclude

- Scientific Method –  
(1) Observe, (2) Theorize/Analyze, (3) Infer.
- **Model-C** or Model-M?
- Experiment with these two models in your life!

अमृतस्य पुत्राः

"**Children of immortal bliss**" — what a sweet, what a hopeful name!  
Allow me to call you, brethren, by that sweet name — heirs of immortal bliss...  
.... Come up, O lions, and shake off the delusion that you are sheep;  
**you are souls immortal**, spirits free, blest and eternal; **ye are not matter**,  
**ye are not bodies**; matter is your servant, not you the servant of matter.

~ *Swami Vivekananda, 19th September, 1893, The Parliament of Religions*



**NIAS**

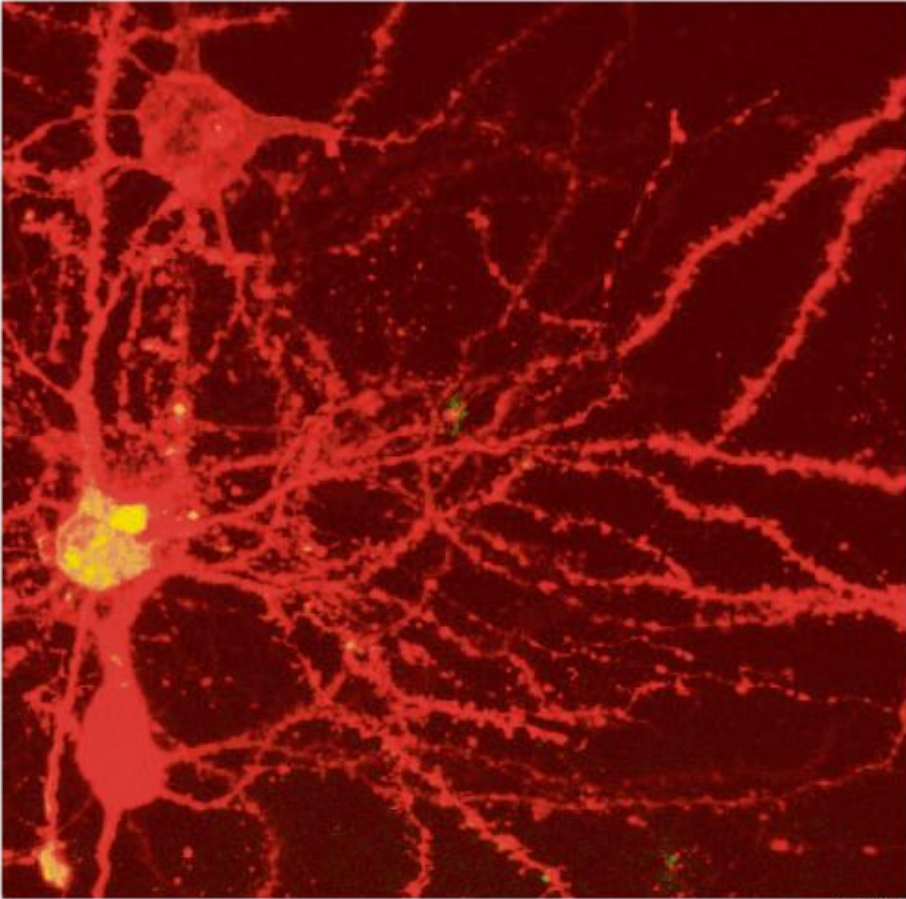


**NIAS CSP**

Thank You  
Email: [nithin@nias.res.in](mailto:nithin@nias.res.in)

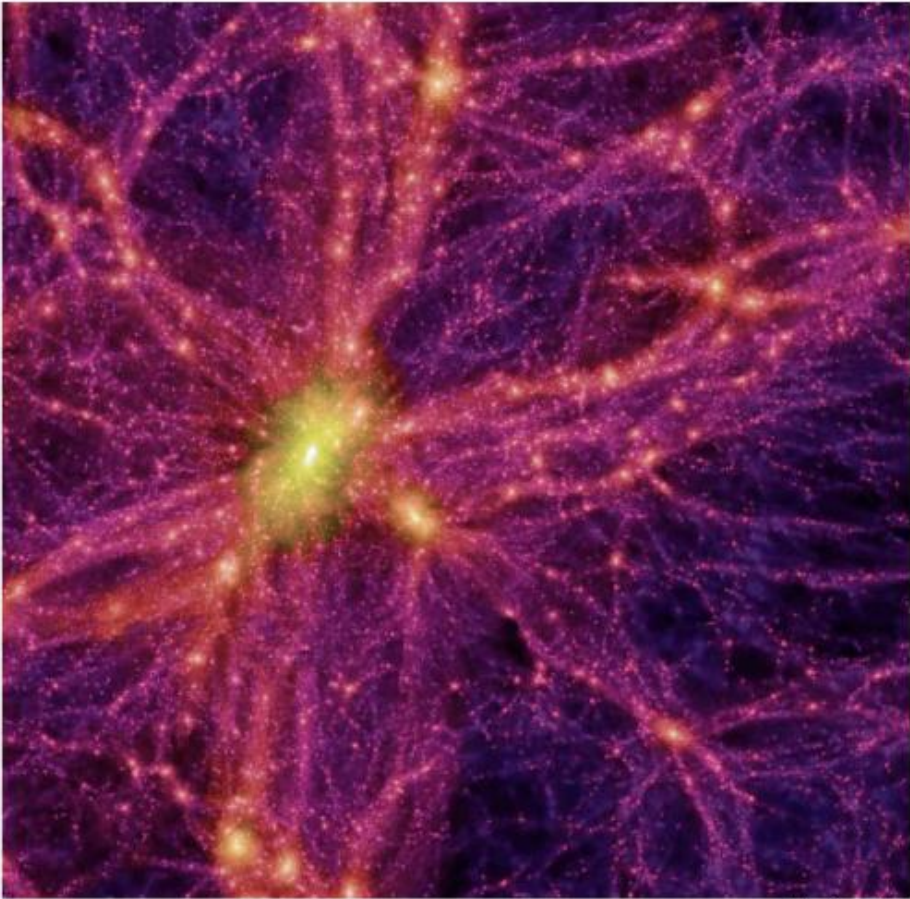
# Extras

One is only micrometers wide. The other is billions of light-years across. One shows neurons in a mouse brain. The other is a simulated image of the universe. Together they suggest the surprisingly similar patterns found in vastly different natural phenomena. DAVID CONSTANTINE



Mark Miller

Mark Miller, a doctoral student at Brandeis University, is researching how particular types of neurons in the brain are connected to one another. By staining thin slices of a mouse's brain, he can identify the connections visually. The image above shows three neuron cells on the left (two red and one yellow) and their connections.



Virgo Consortium

An international group of astrophysicists used a computer simulation last year to recreate how the universe grew and evolved. The simulation image above is a snapshot of the present universe that features a large cluster of galaxies (bright yellow) surrounded by thousands of stars, galaxies and dark matter (web).

Source: Mark Miller, Brandeis University; Virgo Consortium for Cosmological Supercomputer Simulations; www.visualcomplexity.com